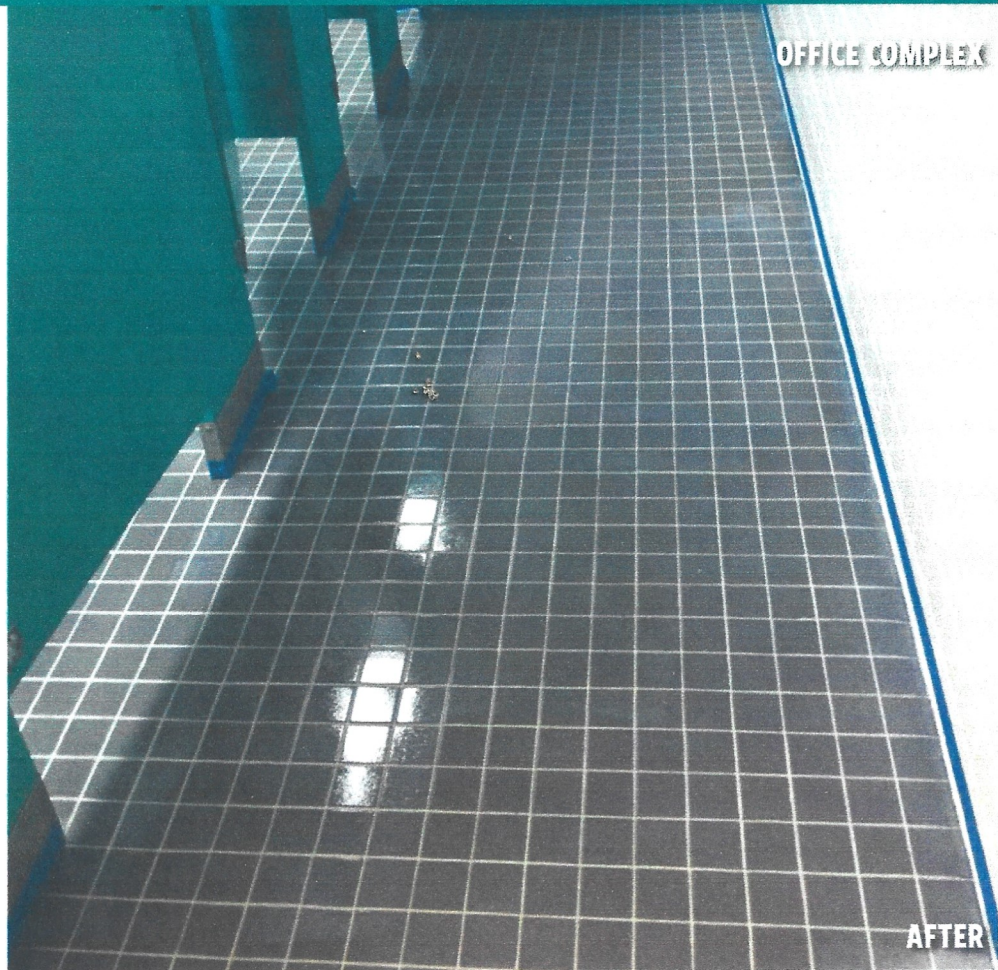


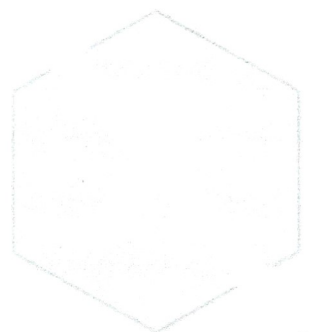
SUPREME XTREME

TILE & GROUT COATINGS SOLUTIONS

LOBBIES, HALLWAYS, RESTROOMS, FOYERS, PATIOS, AUTO BAYS & MORE



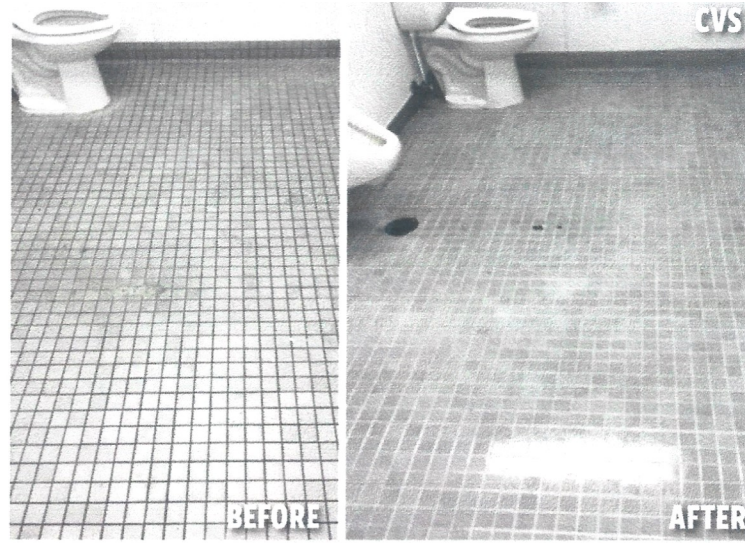
**SOLVENT-FREE - TRUE WATER-BASED VIRTUALLY
ODORLESS - LOW VOC EXCEPTIONAL PERFORMANCE
ALIPHATIC POLYESTER POLYURETHANE**



TECHNOLOGY OVERVIEW

Aliphatic polyester polyurethanes that use water as the "solvent", without sacrificing performance characteristics.

Suitable for virtually any vertical or horizontal surface with inherent chemical and abrasion resistance, hardness, impact resistance, flexibility and increased slip resistance.



APPLICABLE MARKETS

Supreme Xtreme products have exceptional performance characteristics which allow them to be used in many different markets, including:

- EDUCATION
- HEALTHCARE
- SPORTS ARENAS
- RESTAURANTS
- BIG BOX
- BANKS
- AIRPORTS
- HOSPITALITY
- GOV'T. BLDGS.
- CHURCHES
- PRISONS
- RETAIL

**GREAT LOOKING
TILE & GROUT
ALL DAY - EVERY
DAY!**

MCDONALD'S

RESIDENTIAL EXTERIOR PATIO

CO-EFFICIENT OF FRICTION

Products increase the slip resistance of floors vs. bare floors, polished floors or floors coated with acrylic finish (wax).

Products certified by the National Floor Safety Institute as "High Traction"; which means products exceed 0.60 while wet.

EXCELLENT ADHESION

Tile & Grout surfaces are not typically coated due to the tile being very smooth which causes poor adhesion.

Using the Adhesion Bond, Supreme Xtreme Products have perfect, 100% adhesion, to the tile and grout.

SEAL & PROTECT GROUT

The Products seal the grout prevent the grout from discoloring. Thus, white grout will stay white.

In addition, the Products prevent odor causing chemicals from penetrating and leaving lingering smells.

EXTENSIVE CUSTOMER HISTORY & APPLICATIONS

High profile customers from theme parks, education, healthcare, airports, retail, sports arenas and much more.



CADILLAC DEALERSHIP

Merrillville, Indiana

Satin Clear w/Adhesion Bond & GripLok

The product solved a major issue for the dealership; which was very slippery floors that sent some customers to the hospital.



ELEMENTARY SCHOOL

Richmond, Virginia

Matte Light Blue w/Adhesion Bond

The coating was applied to 30+ year old ceramic tile that was light green and looked very old and dirty. The product made the restrooms look brand new again.

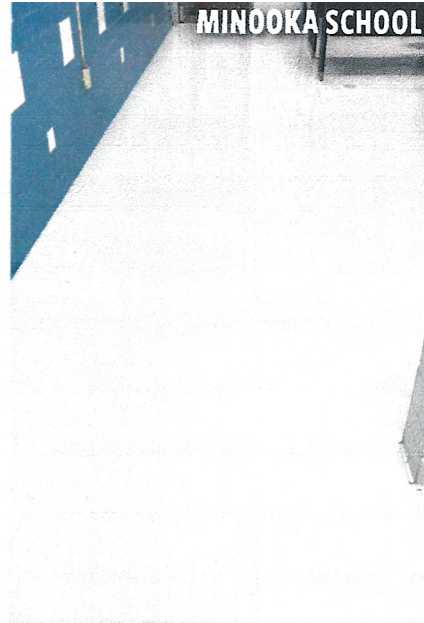


MOVIE THEATER

Philadelphia, PA

Gloss Clear w/Adhesion Bond

The floors were very difficult to clean with all the butter from popcorn. After our product was installed, the customer said the floors are much easier to keep clean.



**U.S. GREEN
BUILDING COUNCIL
LEED**

Products meet
criteria to obtain
LEED credits under
EQ – Low Emitting
Coatings.

ENVIRONMENTALLY FRIENDLY PRODUCTS

- ✓ Low to zero VOCs (all products <20 g/l)
- ✓ "Super Compliant" by South Coast AQMD
- ✓ Virtually odorless
- ✓ Does not contain prop 65 chemicals (known to state of CA to cause cancer)

FINISHING OPTIONS

- ✓ High Gloss (>85°)
- ✓ Satin (~50°)
- ✓ Matte (~15°)
- ✓ Comes in clear or any color

CHEMICAL RESISTANCE

Products have excellent chemical resistance to all types of products, including, bleach, betadyne, mustard, ketchup, skydrol, gasoline, MEK, isopropyl alcohol, ethanol alcohol, and many others.

PERFORMANCE

Excellent properties, including:
 Adhesion: 5B (100%)
 Pencil Hardness: 4H
 Tabor Abrasion: 10-20 mg loss
 Impact Resistance: 160 in. lbs.
 Flexibility: > 32% elongation

EASIER TO MAINTAIN

Without solvents, dirt and other materials cannot stick to the coatings; which makes it easier to clean. Black heel marks are easily removed through mopping or use of an automatic scrubber.

RESTROOM RENOVATION

Completely change the appearance of a tile and grout floor without tearing up and replacing it.

System includes the Hi-Build to level the floor, a base coat of the urethane with flakes and a clear top coat.



SUPREME XTREME PRODUCT DETAILS

	GLOSS	SATIN / MATTE
Type of Product	Aliphatic Polyester Polyurethane	Aliphatic Polyester Polyurethane
Number of Components	2	2
Dry Time (Hrs.)	6-8	5-6
Dry Time with Accelerator (Hrs.)	3-4	2-3
Pot Life (Minutes)	90	90
Gloss Level (60° Meter)	85°	Satin 50° Matte 15°
Clear or Color	Both	Both
Horizontal Coverage (Sq. Ft.)	350-400	350-400
Vertical Coverage (Sq. Ft.)	250-300	250-300
VOCs (g/l)	< 5	< 15
Solvents	None	None
Primer Needed	No	No
Abrasion Resistance (mg loss)	10-20	33
Hardness	4H	3H
Impact Resistance	160 in lbs.	160 in lbs.
Flexibility	>32%	>32%
Adhesion (1)	5B (100%)	5B (100%)
Tensile Adhesion (psi)	2,473-2,609 (1)	1,600-1,800 (1)
Flame Spread	10 Class A Type I	10 Class A Type I
Smoke Developed	5 Class A Type I	5 Class A Type I

(1) These tests were completed with the coating applied direct to steel, no primer.

(2) This test was completed on concrete and the break occurred in the concrete; the coating itself did not fail.

JFB Hart Coatings

jfb supremextreme.com

Jim Beedie | 630-643-0143 | jimbeedie@aol.com

Aidan Thompson | 630-392-4977 | aidan.thompsonjfb@outlook.com